



Reception Induction Meeting 2025

Staff

EYFS Manager: Mrs Emma Goodfellow

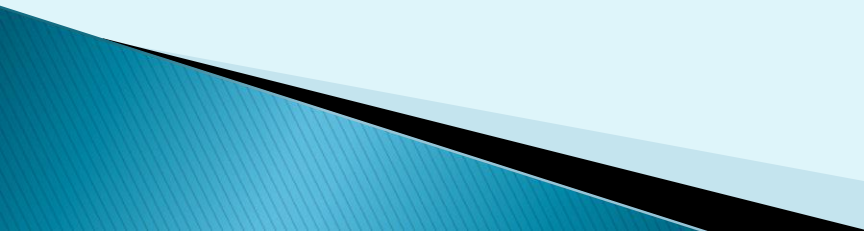
Hedgehogs Teachers: TBC

Teaching Assistant: TBC

Meeting

- To give you an overview of the 2021 Early Years Foundation Stage (EYFS) and the curriculum.
- To find out how the school day is organised.
- To understand how you can support your child at home.

What is the Early Years Foundation Stage (E.Y.F.S)?

- ▶ **The Early Years Foundation Stage** covers the first stage of a child's care from birth to five years old. It sets the standards to ensure that all children learn and develop, as well as keeping them healthy and safe.
 - ▶ All schools and Ofsted registered early years providers in England must follow the EYFS.
 - ▶ Also included in the EYFS are the **seven Areas of Learning**.
- 



The seven areas of learning are:

Personal, Social and Emotional Development

Children learn:

- how to understand their own feelings and those of others
- to manage emotions, develop a positive sense of self, set themselves simple goals, have confidence in their own abilities, to persist and wait for what they want and direct attention
- to look after their bodies, including healthy eating, and manage personal needs independently.
- how to make good friendships, co-operate and resolve conflicts.





Communication and Language

The development of children's spoken language underpins all seven areas of learning and development. Children's back-and-forth interactions from an early age form the foundations for language and cognitive development.

- By commenting on what children are interested in or doing, and echoing back what they say with new vocabulary added, staff will build children's language effectively.
- Staff will read frequently to children, and engage them actively in stories, non-fiction, rhymes and poems, and then provide them with extensive opportunities to use and embed new words in a range of contexts. This will give children the opportunity to thrive.
- Through conversation, story-telling and role play, the children will become comfortable using a rich range of vocabulary and language structures





Physical Development



- ▶ Physical activity is vital in children's all-round development, enabling them to pursue happy, healthy and active lives.
- By creating games and providing opportunities for play both indoors and outdoors, staff will support children to develop their core strength, stability, balance, spatial awareness, co-ordination and agility.
- Gross motor skills provide the foundation for developing healthy bodies and social and emotional well-being.
- Fine motor control and precision helps with hand-eye co-ordination which is later linked to early literacy.



Literacy

It is crucial for children to develop a life-long love of reading.

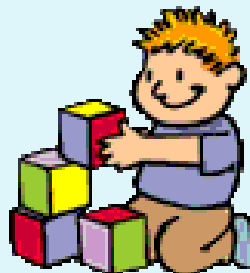
- Reading consists of two dimensions: language comprehension and word reading.
- Language comprehension (necessary for both reading and writing) starts from birth. It only develops when adults talk with children about the world around them and the books (stories and non-fiction) they read with them, and enjoy rhymes, poems and songs together.
- Skilled word reading, involves both the speedy working out of the pronunciation of unfamiliar printed words (decoding) and the speedy recognition of familiar printed words. Writing involves transcription (spelling and handwriting) and composition (articulating ideas and structuring them in speech before writing).



Maths



- ▶ Children should be able to count confidently, develop a deep understanding of the numbers to 10, the relationships between them and the patterns within those numbers.
- ▶ Children will develop a secure base of knowledge and vocabulary from which mastery of mathematics is built.
- Children will develop their spatial reasoning skills across all areas of mathematics including shape, space and measures.
- It is important that children develop positive attitudes and interests in mathematics, look for patterns and relationships, spot connections, 'have a go', talk to adults and peers about what they notice and not be afraid to make mistakes.





Understanding the World

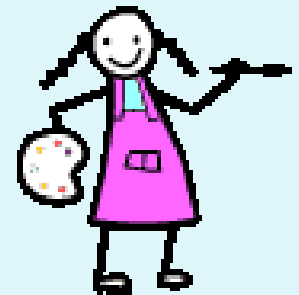
- ▶ Understanding the world involves guiding children to make sense of their physical world and their community.
- The frequency and range of children's personal experiences increases their knowledge and sense of the world around them - from visiting parks, libraries and museums to meeting important members of society such as police officers, nurses and firefighters.
- In addition, listening to a broad selection of stories, non-fiction, rhymes and poems will foster their understanding of our culturally, socially, technologically and ecologically diverse world.



Expressive Arts and Design



- ▶ The development of children's artistic and cultural awareness supports their imagination and creativity.
- Children will be given regular opportunities to engage with the arts, enabling them to explore and play with a wide range of media and materials.
- The quality and variety of what children see, hear and participate in is crucial for developing their understanding, self-expression, vocabulary and ability to communicate through the arts.
- The children will learn to interpret and appreciate what they hear, respond to and observe.



Assessment, progress and reporting

- ▶ We have giant floor books which will show photographs, key vocabulary and learning objectives. These will be available for you to view at stay and play sessions and will be used with the children to reinforce their learning.
- ▶ Online open evenings will be held twice a year and a drop in session in July. Book looks are held at other times in the year
- ▶ A full written report will be sent home in July. Children in Reception get a brief termly report at Christmas and Easter.
- ▶ At the beginning of Reception the children will complete a national Reception Baseline Assessment. We will also complete our own baseline assessments.

At the end of the reception year, children are assessed against the 17 Early Learning Goals.

It is important to remember that:

- The ELGs are not a test. We will use what they already know about a child to make our decisions.

Changes were made in 2021 to the Early Learning Goals Exceeding judgements have been removed. Children are now encouraged and challenged to have a greater depth and understanding of things before moving onto new learning.

A typical day...

- ▶ 8.35 Gate opens
- ▶ 8.40 Children to come in classroom door without an adult. Children choose a book to read.
- ▶ 8.45 Registration and helpers
- ▶ 8.50-9.50 Maths and continuous provision
- ▶ 9.50-10.10 Outdoor play
- ▶ 10.10-11.30 English and continuous provision
- ▶ 11.30 - 12 Phonics
- ▶ 12-1 Lunch (Free school meal)
- ▶ 1- 1.10 Registration
- ▶ 1.10- 2.30 Topic and continuous provision
- ▶ 2.30-2.50 Snack and playtime
- ▶ 2.50 Story, songs and home at 3.15pm from the classroom door.
Gate opens at 3.05pm.

Induction into school

- ▶ This year we will have a Reception class. The children will be in Hedgehogs class.

For those children who already attend our Pre-school, the Reception staff have met your child so this will help ease their transition into Reception. They will have the opportunity to visit the Reception classroom and garden on **Monday 23rd June and Tuesday 24th June**. We will collect them from Pre-school on that day and take them back to Pre-school after lunch. If your child does not usually attend Pre-school on that day, please bring them to the main office door at 9.30am and collect them from there at 12.30pm. If your child does not normally have lunch on that day, please bring £3.25 in cash to pay for your child's lunch.

For those children who have not attended our Pre-school, they will also have the opportunity to visit the Reception classroom and garden on **Monday 23rd and Tuesday 24th June**. Please bring them to the main office door at 9.30am and collect them from there, after lunch at 12.30pm. Please bring £3.25 in cash to pay for your child's lunch.

Children who have not previously attended our Pre-school will start on **Tuesday 2nd September at 8.45am**.

Children who have attended our Pre-school will begin school full-time on **Wednesday 3rd /Thursday 4th September at 8.45m**. **The card in your welcome pack tells you which day your child will start.** Please make sure you bring your child on the correct day to allow the children time to settle in smaller groups.

- ▶ The slightly staggered start will allow the smaller group of children who are new to our school a day to get to know their new school and the staff in Early Years.

What can you do to help your child's learning when they begin school?

- ▶ Reading the phonics book, e book and completing the weekly phonics home learning sheet that is shared on Teams each week.
- ▶ Read/share books at **least** 5 times a week, it does make a difference. Studies show that children who read at home make 20% better progress than children who never read at home. We can see this in school.
- ▶ Read our weekly blog on Teams which tells you what we have been learning in class. Talk about this learning with your child to reinforce new knowledge and skills.
- ▶ Ongoing-encourage mark making, shopping lists etc.
- ▶ Encourage children to talk, introduce new vocabulary, explain how things work etc!
- ▶ Practise counting at any time-climbing the stairs, shopping etc.
- ▶ Play simple board games
- ▶ Sing number rhymes and songs together
- ▶ Get your child to dress and undress independently, including putting coats on and pulling up zips.
- ▶ Encourage independent toileting (including wiping of own bottom), use of a knife for cutting food and a fork for eating, dressing and good hygiene habits - blowing own nose etc!

Little Wandle Phonics

- ▶ We follow the Little Wandle Phonics scheme.
- ▶ We have a dedicated section on our website with lots of information: <http://www.springfieldsfirstschool.org.uk/little-wandle/>
- ▶ Each week the children will have two reading books to read at home. One book will be sent via the e-book subscription which will be the book which your child has been learning from in school during the week. This book is key to reading practice as it is the one linked to our scheme for teaching phonics and reading. Later in the year your child will also come home with a book from the 'Floppy's Phonics' range. This book will contain all of the sounds which your child has been learning at school. These books are called 'reading practice books'. The children should be able to read the practice book with developing confidence and fluency without any significant help. The parent/carer's role is to listen with interest and, most importantly, to encourage and praise.
- ▶ The children will also have a library/sharing book for you to enjoy together.
- ▶ Initially the children may have books without words in them - they are purely discussion books to help develop vocabulary.
- ▶ Children will not be given any ebooks for the first few weeks until we have completed our initial assessments. Physical books will not be sent home initially and you will purely have the e book to read.

Uniform

- ▶ Supplier- 'School's in' on Stone Business Park Please ensure that names are in EVERYTHING!!!
- ▶ Send coats EVERY DAY
- ▶ Sensible shoes (no laces) and no jewellery
- ▶ **PLEASE** do not send a large bag to school as we simply do not have room to store them. The children have been given a book bag by school and just need to bring a small PE bag with spare pants, socks, tights, trousers and skirts in, in case of accidents. This small bag will stay in school. Each day the children just need to bring one healthy snack, a water bottle and their book bag.
- ▶ Children will come to school dressed in their P.E. kits on **Tuesdays** (subject to change!)
- ▶ Fitness Friday - children will come in their PE kit and school hoodie which is available from School's In uniform shop in Stone.
- ▶ A pair of wellies to stay in school for Forest School on **Thursdays** (subject to change)
- ▶ Labelled water bottles (containing water not juice if possible please) are needed every day.

The First Few Days ...

There can be a lot to remember in the first few days, but please do not worry as your child will soon be teaching you the routines!

All clothing
named with
proper labels
not pen!

Wellies in
school

Named water
bottle

Book bag
everyday

Fruit/healthy
snack (no
yoghurts) if
needed in the
morning

Fitness Friday (PE
clothes) on a
Friday!

Milk every
afternoon until
they are age 5.

Free hot
school dinner

Other matters...

- ▶ Please let us know if someone different is collecting your child! Children collected from the classroom door by 3.15pm
- ▶ Medical
 - Any sickness or diarrhoea must be followed by at least 48 hours absence.
 - Dietary requirements - need to make an appointment to see the cook before the end of term.
 - Head lice are common! Please check regularly and treat as recommended (day 1 and then 7 days later.)
 - Any absence requires a telephone call to the school office by 9:15am
 - Any prescribed medication can only be administered by prior arrangement with the school office
- ▶ Please complete and return all school forms by Friday 21st June at the latest. We need the forms before your child comes for their visit.

Thank you

- ▶ We look forward to a happy partnership in your child's first year at school and beyond.



Useful website:

www.foundationyears.org.uk